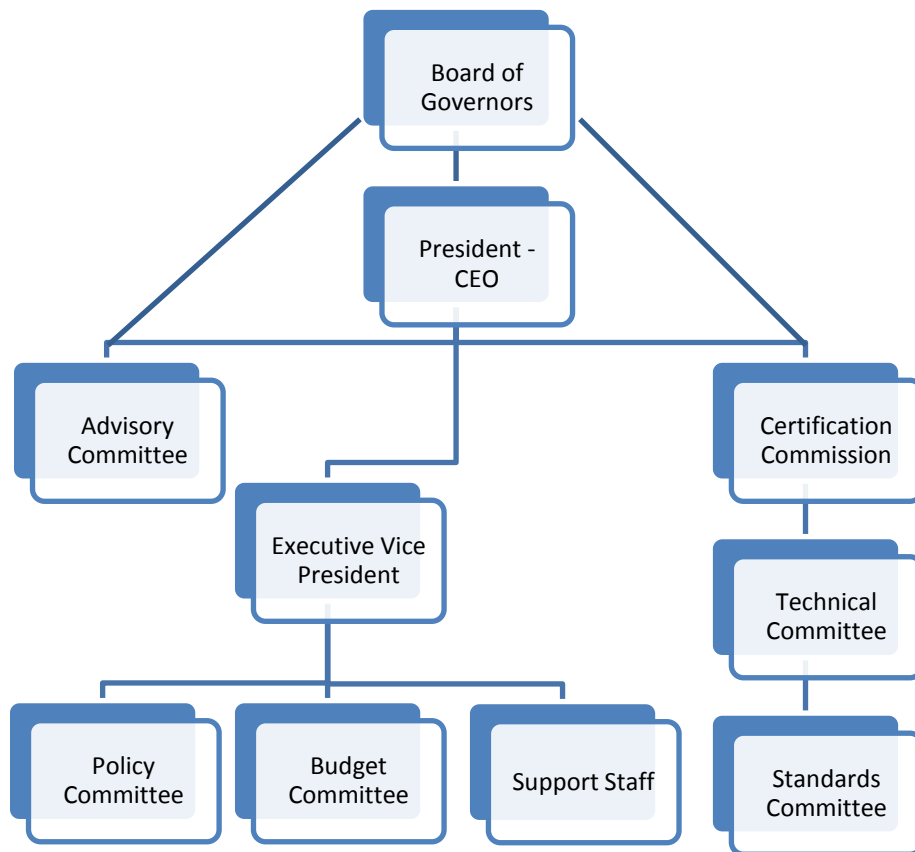


ORGANIZATIONAL CHART



Support Staff

The Board of Governors is responsible for the affairs of the National Association of Forensic Counselors.

The President and Chief Officer of the National Association is appointed by the Board of Governors and serves at the pleasure of the Board of Governors.

Advisory Committee

Consists of five (5) Clinically Certified Subject Matter Experts that provides the President-CEO and the Board of Governors with guidance regarding the delivery of its certification program, program quality, and communication with the criminal justice systems.

Certification Commission

The Commission is responsible for all matters related to certifications including but not limited to conducting job task analysis studies, examination development, standards development, policies and procedures related to certification, training subject matter experts for item writing and judging. The Certification Commission may appoint as many sub-committees as it may deem necessary in order to fulfill its mission including a standards and technical subcommittee.

Policy Committee

The Policy Committee is responsible for the reviewing of and development of policy and procedures pertaining to program development, public relations, membership relations.

Budget Committee

The Budget Committee is charged with providing guidance to the President-CEO and the Board of Governors in making financial decisions that may affect the organization's annual budget allowances. The Committee is responsible for developing the annual budget for the organization along with the organizations Certified Public Accountant.

Technical Committee

The Technical Committee is appointed by the Certification Commission to provide guidance concerning matters of performing studies, test design, test development, etc. The Technical Committee activities are overseen by their consultants from Indiana University-Purdue University Center for Social Research.

Standards Committee

The Standards Committee working closely with Indiana University-Purdue University Center for Social Research is responsible for staying abreast of system changes within the criminal justice and corrections industry that may affect the organization's certification standards.

President-CEO

The President-CEO is responsible for managing the day to day operations of the organization.

Executive Vice President

The Executive Vice President is responsible for managing and supervising support staff. The Vice President shall assume the responsibilities of the President-CEO in the event of disability, illness or death.

Support Staff

The support or office staff is responsible for carrying out their duties as delineated in their job descriptions or other duties as may be required.